

MIRUS™

PLUGINS

Field Applicator



What is a Field Applicator?

Field applicators—or sprayers—allow field researchers to easily and efficiently apply various products to individual plots. Most research sprayers include several booms, each boom connected to a pressurized tank filled with a different formulation.

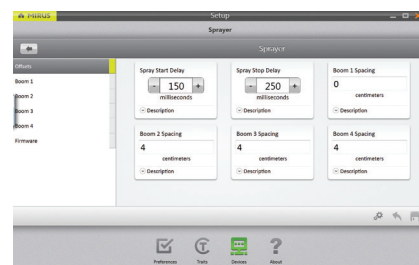
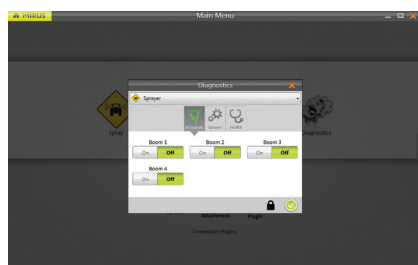
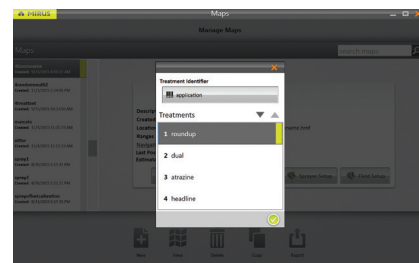
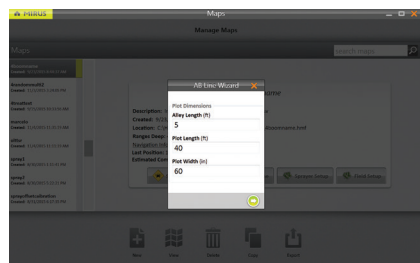
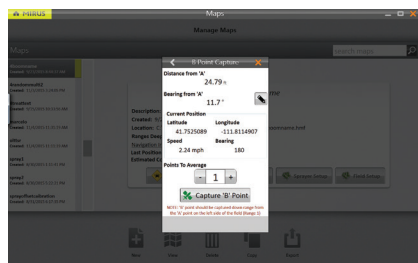
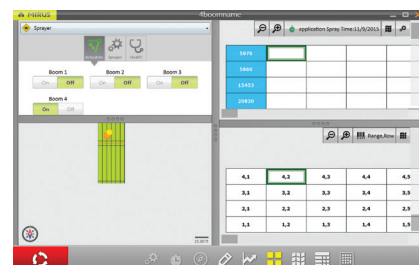
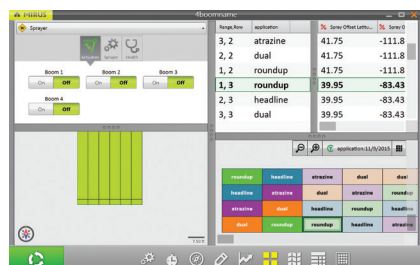
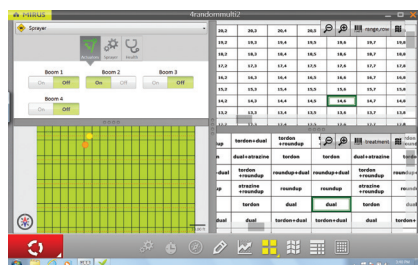
Using a Field Applicator with Mirus

HarvestMaster's Mirus data collection software has a plugin available for field applicators that allows you to easily control the applicator from within the Mirus dashboard. This plugin eliminates the usual bulky and often confusing toggle switch boxes that are typically used to control the field applicator. Simply import a file that specifies which formulation is to be applied to each plot, then choose to control the applicator either manually or through GPS positioning data.



How Does the Plugin Help Me?

- Ensures that the correct product is applied to each plot
- Minimizes time spent in the field applying products
- Provides accurate records of which product was applied to each plot and at what time
- Reduces stress on operators
- Provides a simple way to turn the applicator on and off using either a manual switch or GPS coordinates
- Is easily installed and customized for a variety of spray rigs and GPS receivers



Contact HarvestMaster for a quote today!